

---

1 **Effect of gastroesophageal reflux disease on sleep disorders: a Mendelian randomization**  
2 **study**

3 Zijie Li<sup>1,2#</sup>, Weitao Zhuang<sup>1,3#</sup>, Junhan Wu<sup>1,2</sup>, Haijie Xu<sup>2,4</sup>, Yong Tang<sup>1</sup>, Guibin Qiao<sup>1,2\*</sup>

4

5 **Author information**

6 **Affiliations:**

7 <sup>1</sup> Department of Thoracic Surgery, Guangdong Provincial People's Hospital (Guangdong  
8 Academy of Medical Sciences), Southern Medical University, Guangzhou 510080, China

9 <sup>2</sup> Shantou University Medical College, Shantou 515041, China

10 <sup>3</sup> Department of Medical Oncology, State Key Laboratory of Oncology in South China,  
11 Collaborative Innovation Center for Cancer Medicine, Sun Yat-sen University Cancer Center,  
12 Guangzhou 510060, China

13 <sup>4</sup> Department of Thoracic Surgery, The First Affiliated Hospital of Shantou University  
14 Medical College, Shantou 515041, China

15 # These authors contributed equally to this work.

16

17 **\*Corresponding to:**

18 Guibin Qiao, MD, PhD

19 Department of Thoracic Surgery, Guangdong Provincial People's Hospital (Guangdong  
20 Academy of Medical Sciences), Southern Medical University, Guangzhou 510080, China

21 [guibinqiao@126.com](mailto:guibinqiao@126.com)

22

---

23 **Abstract**

24 **Background:** Recently observational studies have consistently shown an association between  
25 gastroesophageal reflux disease (GERD) and sleep disorders. In this study, Mendelian  
26 randomization (MR) analysis was performed to determine the genetic causal relationship  
27 between GERD and the risk of sleep disorders.

28 **Methods:** The summary statistics of GERD and sleep disorders were obtained through  
29 large-scale genome-wide association studies (GWAS). In addition to exploring sleep disorders,  
30 a deeper analysis was conducted on some major categories of sleep disorders such as sleep  
31 apnoea and insomnia. Various MR analysis methods including inverse-variance weighted  
32 (IVW), MR Egger, weighted median, simple mode, and weighted mode were performed, and  
33 the results of IVW were taken as the primary results. In addition, sensitivity analyses  
34 including heterogeneity test and pleiotropy test were also performed to test the robustness of  
35 the MR results.

36 **Results:** After removing the ineligible SNPs and the palindromic SNPs, IVW detected a  
37 significant effect of GERD on sleep disorders (OR = 1.436, 95% CI: 1.309-1.576,  $p =$   
38  $2.099E-14$ ) and sleep apnoea (OR = 1.486, 95% CI: 1.341-1.647,  $p = 4.409E-14$ ). However,  
39 there was no genetic causality in the effect of GERD on insomnia (IVW OR = 1.146, 95% CI:  
40 0.877-1.498,  $p = 0.319$ ). Furthermore, the heterogeneity test and pleiotropy test found no  
41 evidence of bias, which indicated the results were robust.

42 **Conclusions:** Our study found that the presence of GERD increased the risk of sleep  
43 disorders and sleep apnoea, but not the risk of insomnia. Further research is needed to identify  
44 the specific mechanisms of causal relationships.

45

46 **Short title:** GERD and sleep disorders

47

48 **Keywords:** gastroesophageal reflux disease; sleep disorders; sleep apnoea; Mendelian

49 randomization

50

51

52

53

54

55

56

57

58

59

60

61

62

63

64

65

66

---

67

68 **Background**

69 Gastroesophageal reflux disease (GERD) is an illness describing the reflux of gastric  
70 contents into the esophagus. Acid regurgitation and heartburn are common uncomfortable  
71 symptoms of GERD [1]. Long-term GERD can lead to esophagitis and also increase the risk  
72 of esophageal cancer [1]. Approximately 13% of the general population worldwide suffer  
73 from GERD at least once a week [2].

74 Besides the esophageal symptoms, GERD has numerous extra-esophageal symptoms,  
75 among which chronic cough and laryngitis are two well-known clinical manifestations [3].  
76 Remarkably, it has been indicated that there might be a strong correlation between GERD and  
77 sleep disorders in many previous studies [4, 5], and the relationship might be bidirectional  
78 [6-9]. GERD not only affects the objective sleep quality, but also may lead to the development  
79 of obstructive sleep apnoea (OAS) and insomnia [4, 10]. On the one hand, previous studies  
80 have shown that therapy for GERD could impair subjective sleep parameters and improve  
81 sleep quality in patients with sleep disorders [4, 6, 11]. What is more, continuous positive  
82 airway pressure treatment in patients with OSA has been shown to simultaneously improve  
83 sleep quality and mitigate acid regurgitation [12].

84 There has been controversy regarding the bidirectional relationship between GERD and  
85 sleep disorders which needs to be urgently resolved. Recently, a study has genetically  
86 confirmed that sleep disorders such as insomnia and short sleep are risk factors for GERD  
87 [13]. However, the essential relationship between GERD and the risk of developing sleep  
88 disorders has not been robustly demonstrated. Moreover, existing observational

---

89 epidemiological findings may be influenced by confounding factors and reverse causality,  
90 making causal inference difficult [14]. It is of great significance to demonstrate the causal  
91 relationship between GERD and sleep disorders, which is particularly relevant for the  
92 adjustment of clinical interventions.

93 It is impractical and unethical to evaluate the effect of GERD on sleep disorders by  
94 randomized controlled trials (RCTs), even though they are the best causal inference method in  
95 etiology. Mendelian randomization (MR) analysis uses single nucleotide polymorphisms  
96 (SNPs) as proxies of exposure to assess the effect on outcome [15, 16]. Genetic instrumental  
97 variables (IVs) are assumed to affect outcome only through exposure, without confounding  
98 factors. Therefore, MR analysis is less influenced by reverse causality and confounders [17].  
99 This study aims to explore the potential causal association between genetic liability for GERD  
100 and the risk of sleep disorders through MR analysis.

101

## 102 **Methods**

### 103 **Study design**

104 Our study followed the newly generated STROBE-MR statement for reporting MR  
105 research [18]. The basic process of MR analysis was shown in Figure 1. In this study, we set  
106 GERD and sleep disorders as exposure and outcome, respectively. The genetic information of  
107 GERD derived from a genome-wide association study (GWAS) was set as IVs.

### 108 **Data sources**

109 For GERD, we retrieved the GWAS summary data from the largest published GWAS  
110 study of GERD in European populations, which included 129,080 cases and 473,524 controls

---

111 [19]. For sleep disorders, there are seven main categories of sleep disorders [20]. Previous  
112 observational studies have shown that GERD has an impact on sleep disorders, particularly on  
113 sleep apnoea and insomnia [4, 10]. Therefore, in addition to exploring sleep disorders, we  
114 have also analyzed several major categories of sleep disorders such as sleep apnoea and  
115 insomnia for a deeper analysis. GWAS summary statistics for several aforementioned  
116 phenotypes were obtained from the FinnGen Consortium (Table 1). All the GWAS summary  
117 data applied in this study can be obtained from the IEU open GWAS project  
118 (<https://gwas.mrcieu.ac.uk/>).

### 119 **Selection of IVs**

120 MR is based on three critical assumptions: (1) IVs are closely related to GERD; (2) IVs  
121 should not be affected by known or unknown confounding factors; and (3) IVs only affect  
122 sleep disorders through GERD [21]. The following standard procedures were used to select  
123 the best IVs, which ensured the integrity and accuracy of the results. First, SNPs that reached  
124 the genome-wide significant threshold ( $p < 5 \times 10^{-8}$ ) were extracted. To ensure the  
125 independence of IVs, a clumping process ( $r^2 < 0.001$  and distance  $> 10,000$  kb) was  
126 performed, which used linkage disequilibrium (LD) estimates calculated from Europeans in  
127 the 1000 Genomes project [22]. Second, ensuring that there is no association between the  
128 instrumental SNPs and confounding factors, which was identified through the PhenoScanner  
129 database [23]. Third, the GERD SNPs that were closely associated ( $p < 5 \times 10^{-5}$ ) with sleep  
130 disorders were considered ineligible SNPs and were further excluded. Furthermore,  
131 F-statistics is the measurement of the strength of IVs, which equals to  $R^2 \times (N - 2) \div (1 - R^2)$ ,  
132 where  $R^2$  refers to the proportion of exposure variability explained by each IV and N refers to

---

133 the sample size of the GWAS for exposure [24].  $R^2$  is calculated by the equation:  $2 \times \text{EAF} \times$   
134  $(1 - \text{EAF}) \times \text{Beta}^2$ , which used to represent the proportion of variance in an exposure factor  
135 explained by the IVs. EAF is the effect allele frequency and Beta represents the estimated  
136 genetic effect on the risk of GERD [25]. F-statistics  $> 10$  are typically used as the cutoff for  
137 powerful IVs, and F-statistics less than 10 usually indicate the weak instrument bias [26].

### 138 **MR analysis methods**

139 In this study, the inverse variance weighted (IVW) method was conducted as the primary  
140 analysis method to identify significant causal associations between genetic liability to GERD  
141 and the risk of sleep disorders with  $p < 0.05$ . In addition, we performed the following  
142 additional methods, including MR Egger, weighted median, simple mode, and weighted mode,  
143 which enhanced the reliability of causal results [27]. If the estimates direction of the above  
144 MR methods were significantly similar, it indicated that the causal effect of GERD on sleep  
145 disorders was stable and reliable.

### 146 **Sensitivity analysis**

147 The Cochran's Q test was used to assess heterogeneity between SNPs in the IVW  
148 method. It was considered that there was no heterogeneity in the causal analysis when the  
149  $p\text{-value} \geq 0.05$  [28]. Meanwhile, the random-effects IVW test was utilized to provide a  
150 more conservative yet robust estimate when heterogeneity exists ( $p < 0.05$ ). The MR  
151 Pleiotropy RESidual Sum and Outlier (MR-PRESSO) test was applied to detect potential  
152 horizontal pleiotropy and correct it by removing outlier SNPs [29]. In addition, the  
153 leave-one-out analysis was performed to evaluate the reliability of the affiliation between the  
154 SNPs and GERD, evaluating whether any SNP was responsible for the significant results. The

---

155 funnel plot was also used to detect the heterogeneity, and a symmetry plot indicated the  
156 absence of heterogeneity. The results are assumed to be robust when the heterogeneity and  
157 pleiotropy of the results do not exist. All statistical analyses were performed in R software  
158 v4.0.0 (R Core Team 2020) with the “TwoSampleMR” v0.6.0 package, and the “MRPRESSO”  
159 v1.0 package. The forest plot figure was generated in the “forestplot” v3.11 package.

160

## 161 **Results**

### 162 **MR analysis**

163 After removing the ineligible SNPs and the palindromic SNPs, the remaining SNPs were  
164 used for the subsequent MR analysis (Supplemental Table 1-3). All the F-statistics were  
165 greater than 10 (ranging from 208 to 669), indicating no evidence of weak instrument bias. As  
166 shown in figure 2, the IVW analysis exhibited an increased risk of sleep disorders in patients  
167 with GERD ( $p = 2.099E-14$ ). Meanwhile, the estimates from MR Egger ( $p = 0.237$ ), weighted  
168 median ( $p = 3.629E-09$ ), simple mode ( $p = 8.889E-03$ ), and weighted mode ( $p = 5.209E-03$ )  
169 showed a consistent direction of the IVW estimate. In addition, IVW analysis also observed a  
170 causal relationship between GERD and sleep apnoea ( $p = 4.409E-14$ ), and other MR analysis  
171 methods were also statistically consistent. However, there is no causal relationship between  
172 GERD and insomnia (IVW OR = 1.146, 95% CI: 0.877-1.498,  $p = 0.319$ ).

### 173 **Sensitivity analyses**

174 According to the result of Cochran's Q test, there was no heterogeneity observed in MR  
175 Egger and IVW (Table 2). The Egger-intercepts of MR-Egger analyses were not statistically  
176 significantly different from zero ( $p = 0.986$ ,  $p = 0.609$ , and  $p = 0.965$ ), and directional



---

177 horizontal pleiotropy was not detected, which meant the SNPs of GERD do not affect the  
178 incidence of sleep disorders, sleep apnoea, and insomnia through traits other than GERD. The  
179 MR-PRESSO test did not detect any horizontal pleiotropy among the instrumental SNPs  
180 either (Table 2).

181 MR regression slopes showed positive correlations between the effect of SNP on GERD  
182 and sleep disorders as well as sleep apnoea (Figure 3). The results of the leave-one-out  
183 analysis demonstrated that the risk estimates of genetically predicted GERD on sleep  
184 disorders, sleep apnoea, and insomnia were remarkably stable after leaving out one SNP at a  
185 time (Supplemental Figure 1). Moreover, the forest plots and funnel plots also showed that  
186 there was no significant heterogeneity of the instrumental variable SNPs (Supplemental  
187 Figure 2,3)

188

## 189 **Discussion**

190 It is challenging to confirm the causal relationship between GERD and the risk of sleep  
191 disorders without long-term prospective studies and RCTs. Although previous observational  
192 studies have found a high prevalence of sleep disorders in patients with GERD, the results of  
193 these studies are susceptible to confounders as well as reverse causation, which may affect the  
194 robustness of the inferred conclusions. This study provided a genetically potential causal  
195 proof that patients with GERD have a greater risk of sleep disorders and sleep apnoea, which  
196 strongly confirmed the results of previous observational studies and contributed to clinical  
197 strategy optimization.

198 Sleep disorders as well as sleep apnoea may be primarily associated with nocturnal

---

199 GERD rather than daytime GERD. A previous large-scale observational study has shown that  
200 nocturnal gastroesophageal reflux symptom and sleep disorders were both highly prevalent  
201 among patients with GERD (88.9% and 68.3%, respectively). Patients with nocturnal GERD  
202 symptoms were 50% more likely to suffer from sleep disorders than those with GERD  
203 symptoms only during the day [5]. Similarly, Ossur Ingi Emilsson et al. also found that the  
204 patients with nocturnal GERD had more OSA symptoms than the patients without nocturnal  
205 GERD [30]. Furthermore, the treatment of nocturnal GERD including proton-pump inhibitors  
206 has been shown to improve both subjective and objective sleep measurements [8, 11]. The  
207 above evidence revealed that nocturnal gastroesophageal reflux symptoms may be a major  
208 risk factor for sleep disorders in patients with GERD.

209 GERD symptoms negatively affect the quality of sleep and cause sleep disorders. Kindt S  
210 et al. found that 84% of reported sleep disorders were attributed to nocturnal GERD, and the  
211 main causes of sleep disorders due to GERD included reflux in the supine position (72%),  
212 typical reflux disturbing sleep (39%), and waking because of reflux (45%), among 9322  
213 patients with heartburn or regurgitation [31]. In addition, Jui-Sheng Hung et al. indicated that  
214 increased nocturnal acid reflux may play a role in inducing sleep disorders in patients with  
215 GERD [32]. Normally, gravity and peristaltic clearance of esophageal reflux can limit the  
216 contact time between esophageal acid and mucosa. In contrast, during recumbent sleep, the  
217 beneficial effect of gravity is lost. Meanwhile, salivation and swallowing are dramatically  
218 decreased and peristalsis of esophageal wall is repressed, especially during deep sleep, which  
219 can lead to prolonged acid contact in the esophagus and favor upward migration of refluxate  
220 into the proximal esophagus during sleep [33]. When gastroesophageal reflux occurred during

---

221 sleep, it might cause heartburn sensations, which may interfere with sleep and lead to sleep  
222 disorders. Moreover, the severity of sleep disorders is closely related to the severity of  
223 nocturnal acid reflux and esophageal pH changes [34]. Furthermore, a significant proportion  
224 of people with GERD are more likely to have accompanying conditions such as functional  
225 dyspepsia and irritable bowel syndrome, which affected the quality of life and might have an  
226 impact on sleep disorders [35].

227 Notably, multiple mechanisms may exist between GERD and the high risk of sleep  
228 apnoea, mainly including the vagal reflex, and the repetitive microaspiration of refluxed  
229 gastric acid by the respiratory tract. Most patients with GERD have nocturnal acid reflux  
230 symptoms because the lying position during sleep can lead to the migration of gastric acid and  
231 aspiration into the respiratory tract [36]. During the sleep period, the refluxed gastric acid in  
232 the distal esophagus might trigger the vagal reflex, which facilitates bronchospasm,  
233 vasodilatation and mucus secretion, resulting in airway stenosis and obstruction [37]. The  
234 migration of refluxed gastric contents and microaspiration of acid also could cause  
235 inflammation and edema of the upper airway, as well as bronchoconstriction, thereby  
236 predisposing to OSA.

237 This was the first MR study to illustrate the causal relationship between GERD and the  
238 high risk of sleep disorders. The current study had several strengths. First, the MR study is  
239 different from the observational study in that genetic associations can be obtained from  
240 large-scale GWAS, which can significantly improve the statistical efficacy of causal  
241 relationship. Second, the MR study is not susceptible to confounding factors and reverse  
242 causality that are commonly seen in observational studies. Third, the sensitivity analysis

---

243 including the heterogeneity test and pleiotropy test can verify the robustness of the results,  
244 thereby strengthening the evidence for our findings.

245 Despite the validity and robustness of our findings, the current study had some limitations.  
246 Firstly, although GERD was associated with the risk of insomnia in observational studies [10],  
247 the results of MR analysis were not statistically significant, especially the IVW method,  
248 which needed further study to explore the causal relationship between GERD and insomnia.  
249 Moreover, since the GWAS data used in the study were derived from European populations, it  
250 might limit the generalization of the conclusion to non-European populations. It would be  
251 helpful to provide more valid conclusions by including more GERD-associated SNPs and a  
252 larger sample of more ethnicities. Finally, potential sample overlap might be another source of  
253 bias. However, the F-statistics calculated for all SNPs were sufficiently large (ranging from  
254 208 to 669), suggesting that the bias might be minimal [38].

255

## 256 **Conclusions**

257 Our MR study suggests that GERD is an important risk factor for sleep disorders and  
258 sleep apnoea, whereas we have found no evidence to support an association between GERD  
259 and the risk of insomnia, which may require further study to verify.

260

## 261 **Availability of data and materials**

262 The datasets presented in the current study can be found in online repositories.

263

## 264 **Abbreviations**

---

265 GERD = Gastroesophageal reflux disease

266 OAS = Obstructive sleep apnoea

267 RCTs = Randomized controlled trials

268 MR = Mendelian randomization

269 SNPs = Single nucleotide polymorphisms

270 IVs = instrumental variables

271 GWAS = Genome-wide association study

272 LD = linkage disequilibrium

273 IVW = Inverse variance weighted

274 MR-PRESSO = MR Pleiotropy RESidual Sum and Outlier

275 CI = Confidence intervals

276 OR = Odds ratio

277

## 278 **Acknowledgments**

279 The authors acknowledged Jue-Sheng Ong et al. for their contribution, as well as the effort of

280 the FinnGen Consortium in providing high-quality GWAS data for researchers.

281

## 282 **Ethics declarations**

### 283 **Ethical approval and consent to participate**

284 The GWAS summary data used in this study were obtained from published studies that have

285 been approved by institutional review boards in their respective studies.

### 286 **Consent for publication**

---

287 Not applicable.

288 **Competing interests**

289 The authors declare that they have no competing interests.

290

291 **Authors contribution:**

292 Study project conception: Guibin Qiao and Zijie Li. Research project organization and

293 execution: Weitao Zhuang and Yong Tang. Data curation: Zijie Li, Junhan Wu, and Haijie Xu.

294 Statistical analysis, design, and execution: Zijie Li and Weitao Zhuang. Statistical analysis

295 review: Guibin Qiao and Yong Tang. Writing of the first draft: Zijie Li, Weitao Zhuang,

296 Junhan Wu, and Haijie Xu. Manuscript review: Guibin Qiao and Yong Tang. Yong Tang and

297 Guibin Qiao take responsibility for the data integrity.

298

299 **Funding:** This study was funded by a grant from the Science and Technology Program of

300 Guangzhou, China (202206010103); and the Natural Science Foundation of Guangdong

301 Province (2022A1515012469).

302

303 **References**

304 1. Maret-Ouda J, Markar SR, Lagergren J. Gastroesophageal Reflux Disease. *JAMA*.

305 2020;324(24):2565. doi:10.1001/jama.2020.21573

306 2. Richter JE, Rubenstein JH. Presentation and Epidemiology of Gastroesophageal Reflux

307 Disease. *Gastroenterology*. 2018;154(2):267-276. doi:10.1053/j.gastro.2017.07.045

- 
- 308 3. Sidhwa F, Moore A, Alligood E, Fisichella PM. Diagnosis and Treatment of the  
309 Extraesophageal Manifestations of Gastroesophageal Reflux Disease. *Ann Surg.*  
310 2017;265(1):63-67. doi:10.1097/SLA.0000000000001907
- 311 4. Oh JH. Gastroesophageal reflux disease: recent advances and its association with sleep.  
312 *Ann N Y Acad Sci.* 2016;1380(1):195-203. doi:10.1111/nyas.13143
- 313 5. Mody R, Bolge SC, Kannan H, Fass R. Effects of gastroesophageal reflux disease on sleep  
314 and outcomes. *Clin Gastroenterol Hepatol Off Clin Pract J Am Gastroenterol Assoc.*  
315 2009;7(9):953-959. doi:10.1016/j.cgh.2009.04.005
- 316 6. Fujiwara Y, Arakawa T, Fass R. Gastroesophageal reflux disease and sleep disturbances. *J*  
317 *Gastroenterol.* 2012;47(7):760-769. doi:10.1007/s00535-012-0601-4
- 318 7. Fass R. Effect of gastroesophageal reflux disease on sleep. *J Gastroenterol Hepatol.*  
319 2010;25 Suppl 1:S41-44. doi:10.1111/j.1440-1746.2009.06210.x
- 320 8. Shibli F, Skeans J, Yamasaki T, Fass R. Nocturnal Gastroesophageal Reflux Disease  
321 (GERD) and Sleep: An Important Relationship That Is Commonly Overlooked. *J Clin*  
322 *Gastroenterol.* 2020;54(8):663-674. doi:10.1097/MCG.0000000000001382
- 323 9. Vernia F, Di Ruscio M, Ciccone A, et al. Sleep disorders related to nutrition and digestive  
324 diseases: a neglected clinical condition. *Int J Med Sci.* 2021;18(3):593-603.  
325 doi:10.7150/ijms.45512
- 326 10. Lindam A, Ness-Jensen E, Jansson C, et al. Gastroesophageal Reflux and Sleep

- 
- 327 Disturbances: A Bidirectional Association in a Population-Based Cohort Study, The HUNT  
328 Study. *Sleep*. 2016;39(7):1421-1427. doi:10.5665/sleep.5976
- 329 11. Regenbogen E, Helkin A, Georgopoulos R, Vasu T, Shroyer ALW. Esophageal reflux  
330 disease proton pump inhibitor therapy impact on sleep disturbance: a systematic review.  
331 *Otolaryngol--Head Neck Surg Off J Am Acad Otolaryngol-Head Neck Surg*.  
332 2012;146(4):524-532. doi:10.1177/0194599812436933
- 333 12. Tamanna S, Campbell D, Warren R, Ullah MI. Effect of CPAP Therapy on Symptoms of  
334 Nocturnal Gastroesophageal Reflux among Patients with Obstructive Sleep Apnea. *J Clin*  
335 *Sleep Med JCSM Off Publ Am Acad Sleep Med*. 2016;12(9):1257-1261.  
336 doi:10.5664/jcsm.6126
- 337 13. Sun Y, Cao X, Cao D, et al. Genetic estimation of correlations and causalities between  
338 multifaceted modifiable factors and gastro-oesophageal reflux disease. *Front Nutr*.  
339 2022;9:1009122. doi:10.3389/fnut.2022.1009122
- 340 14. Greenland S, Robins JM. Confounding and misclassification. *Am J Epidemiol*.  
341 1985;122(3):495-506. doi:10.1093/oxfordjournals.aje.a114131
- 342 15. Burgess S, Labrecque JA. Mendelian randomization with a binary exposure variable:  
343 interpretation and presentation of causal estimates. *Eur J Epidemiol*. 2018;33(10):947-952.  
344 doi:10.1007/s10654-018-0424-6
- 345 16. Lawlor DA, Harbord RM, Sterne JAC, Timpson N, Davey Smith G. Mendelian  
346 randomization: using genes as instruments for making causal inferences in epidemiology.



- 
- 347     *Stat Med.* 2008;27(8):1133-1163. doi:10.1002/sim.3034
- 348     17. Burgess S, Timpson NJ, Ebrahim S, Davey Smith G. Mendelian randomization: where  
349     are we now and where are we going? *Int J Epidemiol.* 2015;44(2):379-388.  
350     doi:10.1093/ije/dyv108
- 351     18. Skrivankova VW, Richmond RC, Woolf BAR, et al. Strengthening the Reporting of  
352     Observational Studies in Epidemiology Using Mendelian Randomization: The  
353     STROBE-MR Statement. *JAMA.* 2021;326(16):1614-1621. doi:10.1001/jama.2021.18236
- 354     19. Ong JS, An J, Han X, et al. Multitrait genetic association analysis identifies 50 new risk  
355     loci for gastro-oesophageal reflux, seven new loci for Barrett's oesophagus and provides  
356     insights into clinical heterogeneity in reflux diagnosis. *Gut.* 2022;71(6):1053-1061.  
357     doi:10.1136/gutjnl-2020-323906
- 358     20. Sateia MJ. International classification of sleep disorders-third edition: highlights and  
359     modifications. *Chest.* 2014;146(5):1387-1394. doi:10.1378/chest.14-0970
- 360     21. Emdin CA, Khera AV, Kathiresan S. Mendelian Randomization. *JAMA.*  
361     2017;318(19):1925-1926. doi:10.1001/jama.2017.17219
- 362     22. Hemani G, Zheng J, Elsworth B, et al. The MR-Base platform supports systematic causal  
363     inference across the human phenome. Loos R, ed. *eLife.* 2018;7:e34408.  
364     doi:10.7554/eLife.34408
- 365     23. Kamat MA, Blackshaw JA, Young R, et al. PhenoScanner V2: an expanded tool for

- 
- 366 searching human genotype–phenotype associations. *Bioinformatics*.  
367 2019;35(22):4851-4853. doi:10.1093/bioinformatics/btz469
- 368 24. Palmer TM, Lawlor DA, Harbord RM, et al. Using multiple genetic variants as  
369 instrumental variables for modifiable risk factors. *Stat Methods Med Res*.  
370 2012;21(3):223-242. doi:10.1177/0962280210394459
- 371 25. Park JH, Wacholder S, Gail MH, et al. Estimation of effect size distribution from  
372 genome-wide association studies and implications for future discoveries. *Nat Genet*.  
373 2010;42(7):570-575. doi:10.1038/ng.610
- 374 26. Burgess S, Thompson SG. Bias in causal estimates from Mendelian randomization  
375 studies with weak instruments. *Stat Med*. 2011;30(11):1312-1323. doi:10.1002/sim.4197
- 376 27. Burgess S, Thompson SG. Interpreting findings from Mendelian randomization using the  
377 MR-Egger method. *Eur J Epidemiol*. 2017;32(5):377-389. doi:10.1007/s10654-017-0255-x
- 378 28. Greco M FD, Minelli C, Sheehan NA, Thompson JR. Detecting pleiotropy in Mendelian  
379 randomisation studies with summary data and a continuous outcome. *Stat Med*.  
380 2015;34(21):2926-2940. doi:10.1002/sim.6522
- 381 29. Verbanck M, Chen CY, Neale B, Do R. Detection of widespread horizontal pleiotropy in  
382 causal relationships inferred from Mendelian randomization between complex traits and  
383 diseases. *Nat Genet*. 2018;50(5):693-698. doi:10.1038/s41588-018-0099-7
- 384 30. Emilsson OI, Janson C, Benediksdóttir B, Júlíusson S, Gíslason T. Nocturnal

- 
- 385 gastroesophageal reflux, lung function and symptoms of obstructive sleep apnea: Results  
386 from an epidemiological survey. *Respir Med.* 2012;106(3):459-466.  
387 doi:10.1016/j.rmed.2011.12.004
- 388 31. Kindt S, Imschoot J, Tack J. Prevalence of and impact of pantoprazole on nocturnal  
389 heartburn and associated sleep complaints in patients with erosive esophagitis. *Dis*  
390 *Esophagus Off J Int Soc Dis Esophagus.* 2011;24(8):531-537.  
391 doi:10.1111/j.1442-2050.2011.01189.x
- 392 32. Hung JS, Lei WY, Yi CH, Liu TT, Chen CL. Association Between Nocturnal Acid Reflux  
393 and Sleep Disturbance in Patients With Gastroesophageal Reflux Disease. *Am J Med Sci.*  
394 2016;352(2):141-145. doi:10.1016/j.amjms.2016.05.017
- 395 33. Lim KG, Morgenthaler TI, Katzka DA. Sleep and Nocturnal Gastroesophageal Reflux:  
396 An Update. *CHEST.* 2018;154(4):963-971. doi:10.1016/j.chest.2018.05.030
- 397 34. Karoui S, Chtara O, Bibani N, et al. [Sleep disorders in patients with gastroesophageal  
398 reflux disease: an open clinical and pH metric prospective study]. *Tunis Med.*  
399 2010;88(3):172-177.
- 400 35. De Vries DR, Van Herwaarden MA, Baron A, Smout AJPM, Samsom M. Concomitant  
401 functional dyspepsia and irritable bowel syndrome decrease health-related quality of life in  
402 gastroesophageal reflux disease. *Scand J Gastroenterol.* 2007;42(8):951-956.  
403 doi:10.1080/00365520701204204
- 404 36. Orr WC, Heading R, Johnson LF, Kryger M. Review article: sleep and its relationship to

---

405 gastro-oesophageal reflux. *Aliment Pharmacol Ther.* 2004;20 Suppl 9:39-46.

406 doi:10.1111/j.1365-2036.2004.02239.x

407 37. Canning BJ, Mazzone SB. Reflex mechanisms in gastroesophageal reflux disease and

408 asthma. *Am J Med.* 2003;115 Suppl 3A:45S-48S. doi:10.1016/s0002-9343(03)00192-x

409 38. Pierce BL, Burgess S. Efficient Design for Mendelian Randomization Studies: Subsample

410 and 2-Sample Instrumental Variable Estimators. *Am J Epidemiol.* 2013;178(7):1177-1184.

411 doi:10.1093/aje/kwt084

412

### 413 **Tables**

414 Table 1. Basic information on the GWAS applied in this study.

---

Year	Trait	Consortium	Population	Sample size	N-case	N-control	Number of SNPs
2021	Gastroesophageal reflux disease	PMID: 34187846	European	602,604	129,080	473,524	2,320,781
2021	sleep disorders	FinnGen	European	216,700	19,155	197,545	16,380,458
2021	sleep apnoea	FinnGen	European	217,955	16,761	201,194	16,380,465
2021	insomnia	FinnGen	European	217,855	1,691	216,164	9,851,867

---

415 SNPs, Single nucleotide polymorphisms.

416

417 Table 2. Heterogeneity pleiotropy test of GERD genetic IVs for sleep disorders.

---

Heterogeneity test	Pleiotropy test
--------------------	-----------------

---

Outcomes	MR Egger			Inverse variance weighted			MR Egger			PRESSO
	Q	Q_df	P value*	Q	Q_df	P value*	intercept	SE	P value*	P value*
sleep disorders	74.49	71	0.366	74.49	72	0.397	0.0001	0.009	0.986	0.456
sleep apnoea	79.27	71	0.234	79.57	72	0.253	-0.0055	0.011	0.609	0.310
insomnia	60.62	73	0.849	60.63	74	0.868	-0.0012	0.026	0.965	0.867

418 \*P value  $\geq 0.05$  represents no significant heterogeneity or pleiotropy.

419

## 420 **Figures**

421 Figure 1. Flow chart of this study. SNPs, single-nucleotide polymorphisms; LD, linkage  
422 disequilibrium.

423 Figure2. Mendelian randomization estimates of the associations between GERD and the risk  
424 of sleep disorders. IVW, Inverse variance weighted.

425 Figure 3. Scatter plots of the effect size of each SNP on GERD and sleep disorders. (A) sleep  
426 disorders, (B) sleep apnoea, (C) insomnia. GERD, Gastroesophageal reflux disease.

427

## 428 **Supplementary Information**

429 Supplemental Table 1. SNPs used as instrumental variables of GERD on sleep disorders.

430 Supplemental Table 2. SNPs used as instrumental variables of GERD on sleep apnoea.

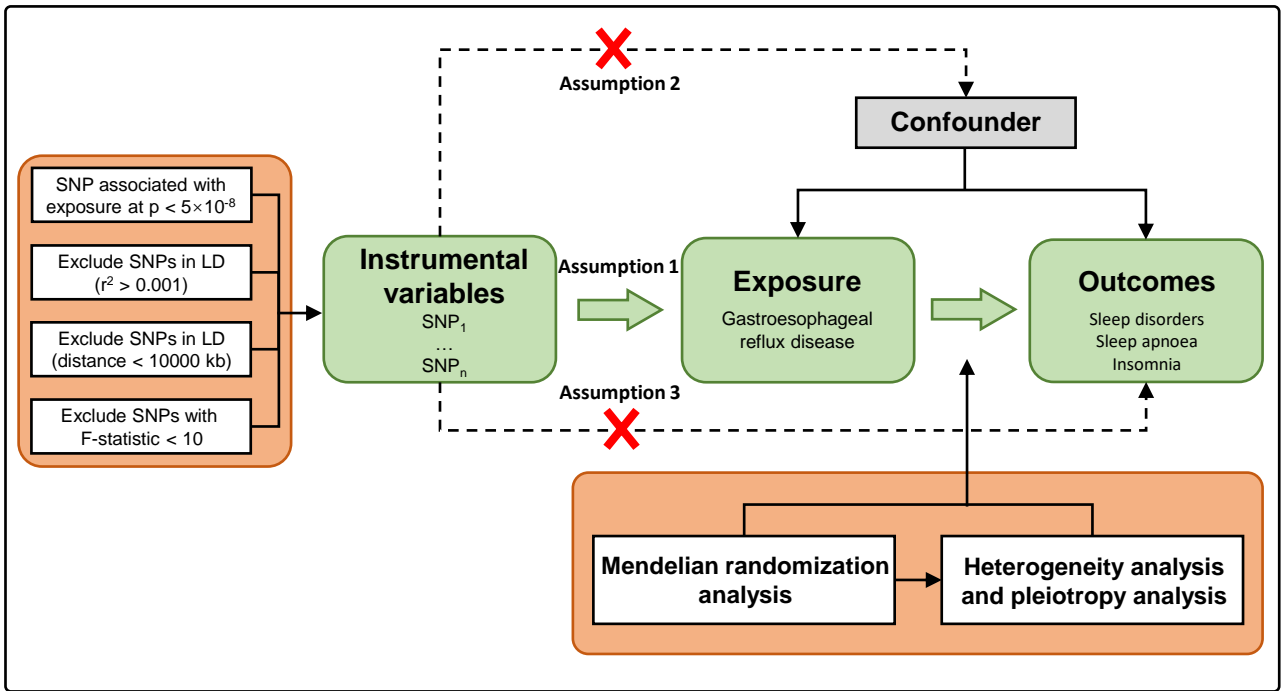
431 Supplemental Table 3. SNPs used as instrumental variables of GERD on insomnia.

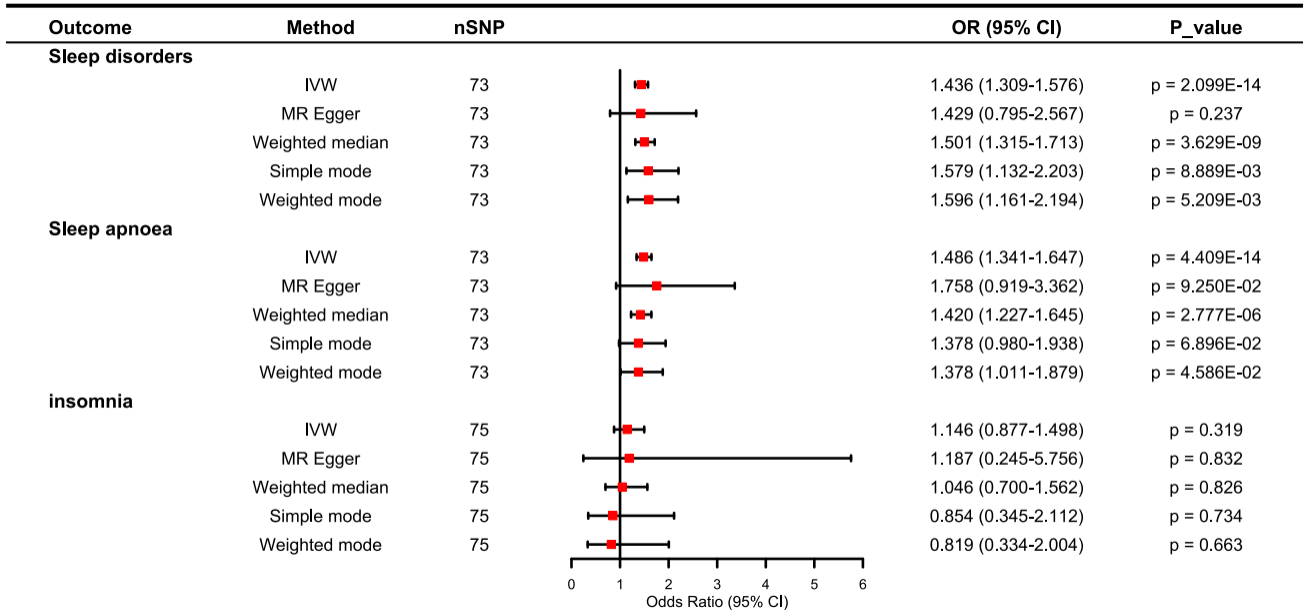
432 Supplemental Figure 1. Leave-one-out analysis of GERD on sleep disorders.

433 Supplemental Figure 2. Forest plots of each SNPs effect for GERD on sleep disorders and all  
434 estimates.

---

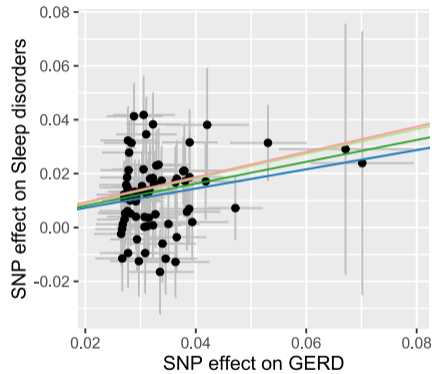
435 Supplemental Figure 3. Funnel plot of SNPs of GERD on sleep disorders.



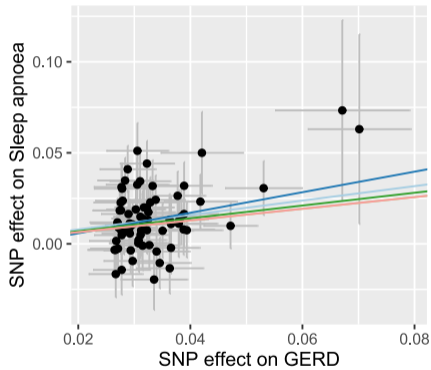




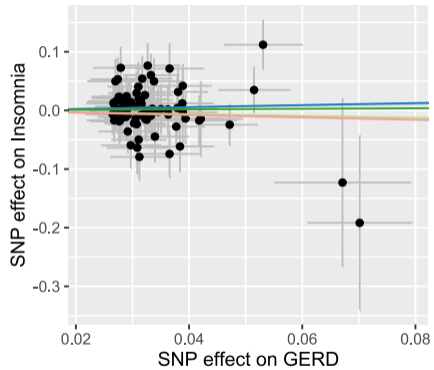
(A) sleep disorders




(B) sleep apnoea




(C) insomnia



 Inverse variance weighted

 Weighted median

 MR Egger

 Weighted mode

 Simple mode